

BMX, Active

Full-length recombinant protein expressed in Sf9 cells

Catalog # B07-10G-10

Lot # W354-4

Product Description

Recombinant full-length human BMX was expressed by baculovirus in Sf9 insect cells using an N-terminal GST tag. The gene accession number is [NM_001721](#).

Gene Aliases

ETK; PSCTK2; PSCTK3

Concentration

0.1 µg/µl

Formulation

Recombinant protein stored in 50mM Tris-HCl, pH 7.5, 150mM NaCl, 10mM glutathione, 0.1mM EDTA, 0.25mM DTT, 0.1mM PMSF, 25% glycerol.

Storage, Shipping and Stability

Store product at -70°C . For optimal storage, aliquot target into smaller quantities after centrifugation and store at recommended temperature. For most favorable performance, avoid repeated handling and multiple freeze/thaw cycles. Stability is 1yr at -70°C from date of shipment. Product shipped on dry ice.

Scientific Background

The BMX gene encodes a non-receptor tyrosine kinase, which may play a role in the growth and differentiation of hematopoietic cells (1). The BMX gene is located on chromosomal band Xp22.2 between the DXS197 and DXS207 loci. Interestingly, chromosome X also contains the closest relative of BMX, the BTK gene, implicated in X-linked agammaglobulinemia. BMX is found to induce activation of the Stat signaling pathway (2).

References

1. Tamagnone, L. et al: BMX, a novel nonreceptor tyrosine kinase gene of the BTK/ITK/TEC/TKX family located in chromosome Xp22.2. *Oncogene*. 1994 Dec;9(12):3683-8.
2. Saharinen, P. et al: The Bmx tyrosine kinase induces activation of the Stat signaling pathway, which is specifically inhibited by protein kinase Cdelta. *Blood*. 1997 Dec 1;90(11):4341-53

Purity

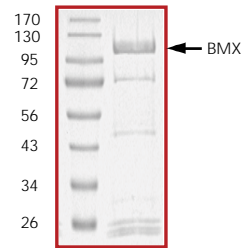
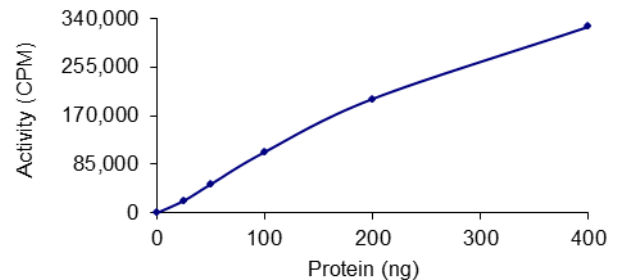


Figure 1. SDS-PAGE gel image

The purity of BMX was determined to be **>80%** by densitometry, approx. MW **110kDa**.

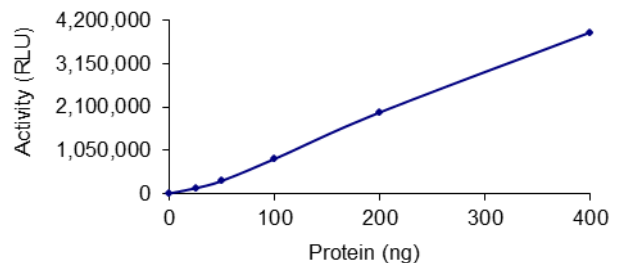
Specific Activity

Figure 2. Radiometric Assay Data



The specific activity of BMX was determined to be **40 nmol /min/mg** as per activity assay protocol.
(For Radiometric Assay Protocol on this product please see pg. 2)

Figure 3. ADP-Glo™ Assay Data



The specific activity of BMX was determined to be **140 nmol /min/mg** as per activity assay protocol.
(For ADP-Glo™ Assay Protocol on this product please see pg. 3)

Activity Assay Protocol

Reaction Components

Active Kinase (Catalog #: B07-10G)

Active BMX (0.1µg/µl) diluted with Kinase Dilution Buffer VIII (Catalog #: K28-09) and assayed as outlined in sample activity plot. (Note: these are suggested working dilutions and it is recommended that the researcher perform a serial dilution of Active BMX for optimal results).

Kinase Dilution Buffer VIII (Catalog #: K28-09)

Kinase Assay Buffer II (Catalog #: K02-09) diluted at a 1:4 ratio (5X dilution) with 50ng/µl BSA solution containing 5% glycerol.

Kinase Assay Buffer II (Catalog #: K02-09)

Buffer components: 25mM MOPS, pH 7.2, 12.5mM β-glycerol-phosphate, 20mM MgCl₂, 25mM MnCl₂, 5mM EGTA, 2mM EDTA. Add 0.25mM DTT to Kinase Assay Buffer prior to use

[³³P]-ATP Assay Cocktail

Prepare 250µM [³³P]-ATP Assay Cocktail in a designated radioactive working area by adding the following components: 150µl of 10mM ATP Stock Solution (Catalog #: A50-09), 100µl [³³P]-ATP (1mCi/100µl), 5.75ml of Kinase Assay Buffer II (Catalog #: K02-09). Store 1ml aliquots at -20°C

10mM ATP Stock Solution (Catalog #: A50-09)

Prepare ATP stock solution by dissolving 55mg of ATP in 10ml of Kinase Assay Buffer II (Catalog #: K02-09). Store 200µl aliquots at -20°C.

Substrate (Catalog #: P61-58)

Poly (Glu₄,Tyr₁) synthetic peptide substrate diluted in distilled H₂O to a final concentration of 1mg/ml.

Assay Protocol

- Step 1. Thaw [³³P]-ATP Assay Cocktail in shielded container in a designated radioactive working area.
- Step 2. Thaw the Active BMX, Kinase Assay Buffer, Substrate and Kinase Dilution Buffer on ice.
- Step 3. In a pre-cooled microfuge tube, add the following reaction components bringing the initial reaction volume up to 20µl:
 - Component 1. 10µl of diluted Active BMX (Catalog #B07-10G)
 - Component 2. 5µl of 1mg/ml stock solution of substrate (Catalog #P61-58)
 - Component 3. 5µl distilled H₂O (4°C)
- Step 4. Set up the blank control as outlined in step 3, excluding the addition of the substrate. Replace the substrate with an equal volume of distilled H₂O.
- Step 5. Initiate the reaction by the addition of 5µl [³³P]-ATP Assay Cocktail bringing the final volume up to 25µl and incubate the mixture in a water bath at 30°C for 15 minutes.
- Step 6. After the 15 minute incubation period, terminate the reaction by spotting 20µl of the reaction mixture onto individual pre-cut strips of phosphocellulose P81 paper.
- Step 7. Air dry the pre-cut P81 strip and sequentially wash in a 1% phosphoric acid solution (dilute 10ml of phosphoric acid and make a 1L solution with distilled H₂O) with constant gentle stirring. It is recommended that the strips be washed a total of 3 intervals for approximately 10 minutes each.
- Step 8. Count the radioactivity on the P81 paper in the presence of scintillation fluid in a scintillation counter.
- Step 9. Determine the corrected cpm by removing the blank control value (see Step 4) for each sample and calculate the kinase specific activity as outlined below.

Calculation of [³³P]-ATP Specific Activity (SA) (cpm/pmol)

Specific activity (SA) = cpm for 5µl [³³P]-ATP / pmoles of ATP (in 5µl of a 250µM ATP stock solution, i.e., 1,250 pmoles)

Kinase Specific Activity (SA) (pmol/min/µg or nmol/min/mg)

Corrected cpm from reaction / [(SA of ³³P-ATP in cpm/pmol)*(Reaction time in min)*(Enzyme amount in µg or mg)]*[(Reaction Volume) / (Spot Volume)]

ADP-Glo™ Activity Assay Protocol

Reaction Components

BMX Kinase Enzyme System (Promega, Catalog #: V4512)

BMX, Active, 10µg (0.1µg/µl)
Poly (Glu₄,Tyr₁), 1ml (1mg/ml)
Reaction Buffer A (5X), 1.5ml
DTT solution (0.1M), 25µl
MnCl₂ solution (2.5M), 25µl

ADP-Glo™ Kinase Assay Kit (Promega, Catalog #: V9101)

Ultra Pure ATP solution, 10 mM (0.5ml)
ADP solution, 10 mM (0.5ml)
ADP-Glo™ Reagent (5ml)
Kinase Detection Buffer (10ml)
Kinase Detection Substrate (Lyophilized)

Reaction Buffer A (5X)

200mM Tris-HCl, pH 7.5, 100mM MgCl₂ and 0.5 mg/ml BSA.

Assay Protocol

The BMX assay is performed using the BMX Kinase Enzyme System (Promega; Catalog #: V4512) and ADP-Glo™ Kinase Assay kit (Promega; Catalog #: V9101). The BMX reaction utilizes ATP and generates ADP. Then the ADP-Glo™ Reagent is added to simultaneously terminate the kinase reaction and deplete the remaining ATP. Finally, the Kinase Detection Reagent is added to convert ADP to ATP and the newly synthesized ATP is converted to light using the luciferase/luciferin reaction. For more detailed protocol regarding *the ADP-Glo™ Kinase Assay*, see the Technical Manual #TM313, available at www.promega.com/tbs/tm313/tm313.html.

- Step 1.** Thaw the ADP-Glo™ Reagents at ambient temperature. Then prepare Kinase Detection Reagent by mixing Kinase Detection Buffer with the Lyophilized Kinase Detection Substrate. Set aside.
- Step 2.** Thaw the components of BMX Enzyme System, ADP and ATP on ice.
- Step 3.** Prepare 1ml of 2X Buffer by combining 400µl Reaction Buffer A, 1µl DTT, 1.6µl MnCl₂ and 597.4µl of dH₂O.
- Step 4.** Prepare 1ml of 250µM ATP Assay Solution by adding 25µl ATP solution (10mM) to 500µl of 2X Buffer and 475µl of dH₂O.
- Step 5.** Prepare diluted BMX in 1X Buffer (diluted from 2X buffer) as outlined in sample activity plot. (Note: these are suggested working dilutions and it is recommended that the researcher perform a serial dilution of Active BMX for optimal results).
- Step 6.** In a white 96-well plate (Corning Cat # 3912), add the following reaction components bringing the initial reaction volume up to 20µl:

Component 1.	10µl of diluted Active BMX
Component 2.	5µl of 1mg/ml stock solution of substrate
Component 3.	5µl of 2X Buffer
- Step 7.** Set up the blank control as outlined in step 6, excluding the addition of the substrate. Replace the substrate with an equal volume of distilled H₂O.
- Step 8.** At the same time as the BMX kinase reaction, set up an ATP to ADP conversion curve at 50µM ATP/ADP range as described in the *ADP-Glo™ Kinase Assay* Technical Manual #TM313.
- Step 9.** Initiate the BMX reactions by the addition of 5µl of 250µM ATP Assay Solution thereby bringing the final volume up to 25µl. Shake the plate and incubate the reaction mixture at 30°C for 15 minutes.
- Step 10.** Terminate the reaction and deplete the remaining ATP by adding 25µl of ADP-Glo™ Reagent. Shake the 96-well plate and then incubate the reaction mixture for another 40 minute at ambient temperature.
- Step 11.** Add 50µl of the Kinase Detection Reagent, shake the plate and then incubate the reaction mixture for another 30 minute at ambient temperature.
- Step 12.** Read the 96-well reaction plate using the Kinase-Glo™ Luminescence Protocol on a GloMax® plate reader (Promega; Cat# E7031).
- Step 13.** Using the conversion curve, determine the amount of ADP produced (nmol) in the presence (step 6) and absence of substrate (Step 7) and calculate the kinase specific activity as outlined below. For a detailed protocol of how to determine nmols from RLUs, see ADP-Glo™ Applications Database at <http://www.promega.com/applications/cellularanalysis/cellsignaling.htm>

Kinase Specific Activity (SA) (nmol/min/mg)

(ADP (step 6) – ADP (Step 7)) in nmol) / (Reaction time in min)*(Enzyme amount in mg)